

FLAT DECK

Composite Steel Flooring System

Flatdeck™ is the newest member of our flooring range backed by Dimond's technical expertise and over 30 years experience in composite flooring.

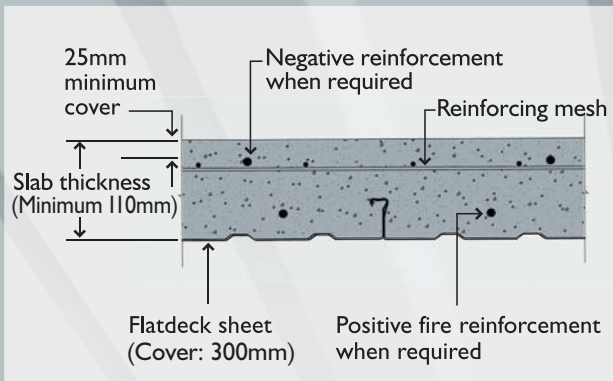


- Self-locking laps and minimal components make for quick and simple installation
- Lightweight sheets are ideal for remote or difficult access sites
- Flat soffit appearance allows use as exposed ceiling for modern industrial look
- Economic alternative to poured slab on hard fill for sloping sites
- Excellent acoustics and fire performance
- Residential and commercial projects



Flatdeck Installation

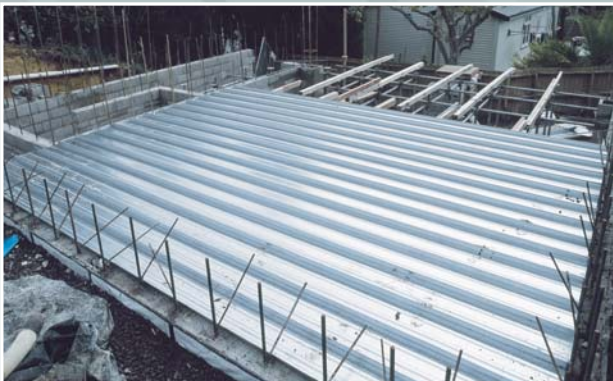
Flatdeck is a versatile, lightweight composite steel flooring system that makes full use of the combined structural properties of both steel and concrete. The result is a strong, stable and durable residential/commercial floor – a floor which provides thermal storage, soundproofing and fire resistance.



The steps outlined below are intended as a guide only, please contact Dimond for a copy of our full installation details.



- 1 Timber bearers and propping must use No. 1 framing timber or scaffolding. Extra propping is recommended if Flatdeck ceiling is to be left exposed.



- 2 Flatdeck sheets are lightweight, have self-locking laps and minimal components making them quick and simple to install.



- 3 With steel beam construction, shear studs are often used to provide extra strength by locking the beam and slab together.



- 4 Concrete is poured evenly moving from the supports out into the span and then vibrated to consolidate the concrete. Must be poured from a height of no more than 300mm.



- 5 Screeding of concrete follows on as the pouring continues before leaving completed slab to cure.

As part of Dimond's policy of continued product improvement, the company reserves the right, at any time, at their discretion and without notice to discontinue or change the features, designs, materials, colours and any other specifications of their product and to either permanently or temporarily withdraw any such products from the market without incurring any liability. This publication is issued as a general guide only and should not be treated as a substitute for detailed technical advice in relation to individual circumstances. Dimond disclaims any liability for loss or damage suffered from the use of such data, except liability under the Consumer Guarantees Act 1993. To the best of our knowledge all information is correct at the time of printing.